

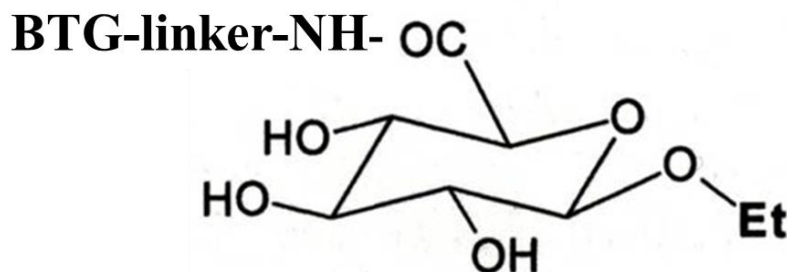
PRODUCT DATA SHEET

Product Data Sheet:	Sheep Monoclonal Antibody (SMA) to ethyl glucuronide (EtG)
SMA Covered	EtG.1E6
Introduction and Production Description	EtG is a metabolite of alcohol and is therefore a marker of alcohol consumption. Because EtG has a longer retention in blood than alcohol itself, EtG offers an extended window of testing.

Manufacturing Specification)

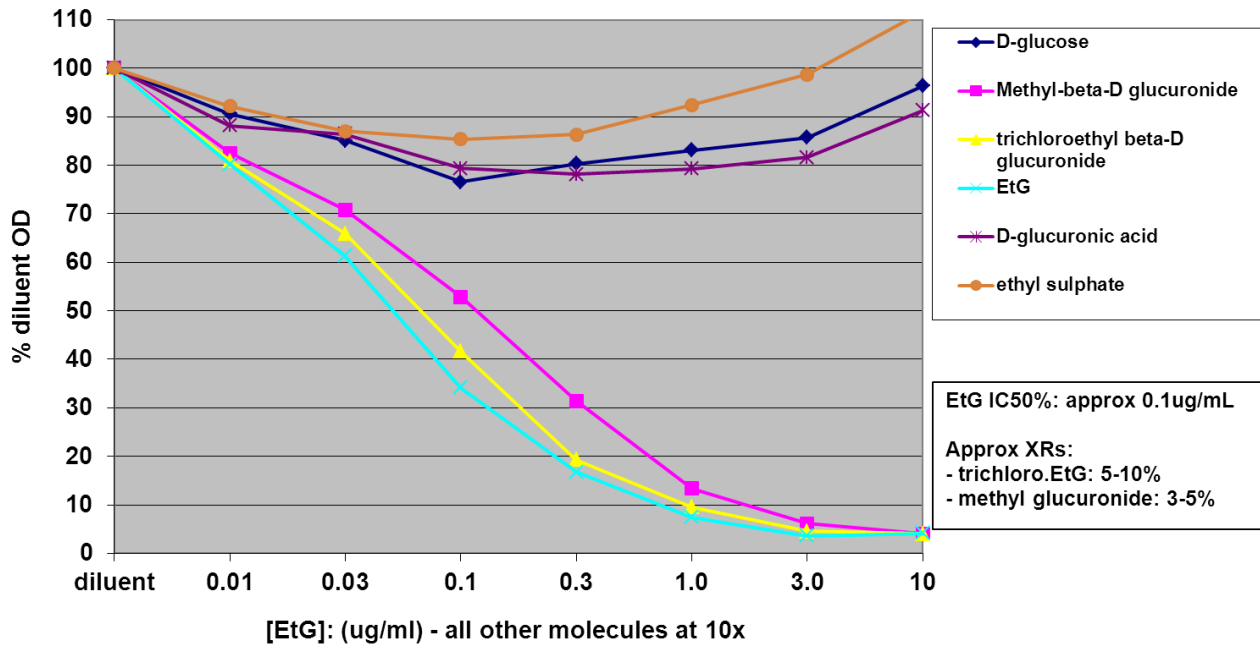
Parameter	Specification	Test Method
Buffer and pH	PBS +0.1% Sodium azide at 7.2-7.4	pH Meter
Antibody Concentration	1-3 mg/mL	A280 (E _c = 1.4)
Purity and Aggregates	Single Main Peak ≥90%	Size Exclusion HPLC
Immunological Activity	±20% biological activity of frozen reference standard	In house ELISA

Immunogen Structure



ELISA DATA: Cross-Reactivities

EtG Fingerprint: EtG.1E6



Datasheet last revised July 2014