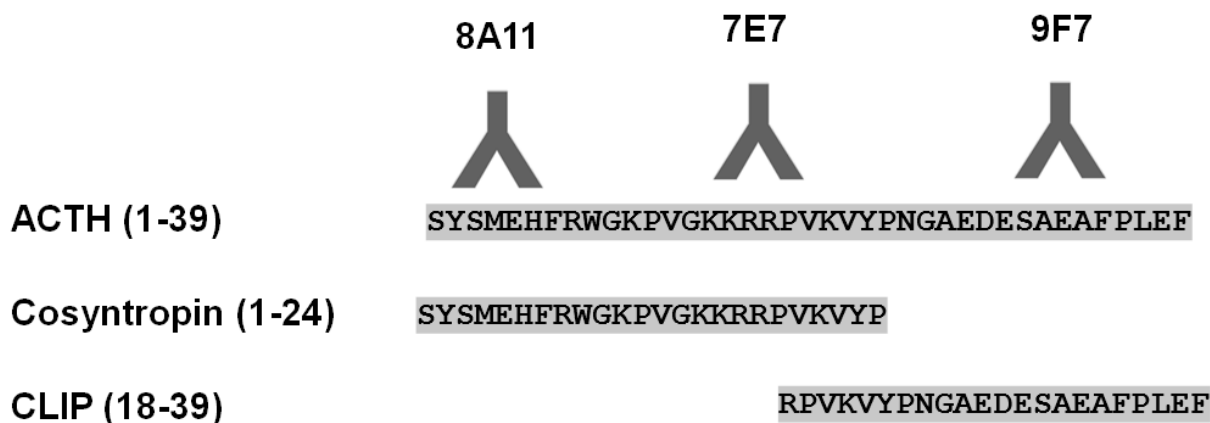


## PRODUCT DATA SHEET

<b>Product Data Sheet:</b>	Sheep Monoclonal Antibodies (SMAs) to: <b>Adrenocorticotrophic hormone (ACTH)</b>
<b>SMA Covered</b>	<b>N terminal: ACTH.8A11</b> <b>Middle: ACTH.7E7</b> <b>C terminal group: ACTH.9F7</b>
<b>Production Description</b>	Plasma ACTH determination is useful in diagnosing disorders of the hypothalamic-pituitary-adrenal system.



### Manufacturing Specification (all SMAs)

Parameter	Specification	Test Method
<b>Buffer and pH</b>	PBS +0.1% Sodium azide at 7.3-7.4	pH Meter
<b>Antibody Concentration</b>	1-3 mg/mL	A <sub>280</sub> (E <sub>c</sub> = 1.4)
<b>Purity and Aggregates</b>	Single Main Peak ≥90%	Size Exclusion HPLC
<b>Immunological Activity</b>	±20% biological activity of frozen reference standard	In house ELISA